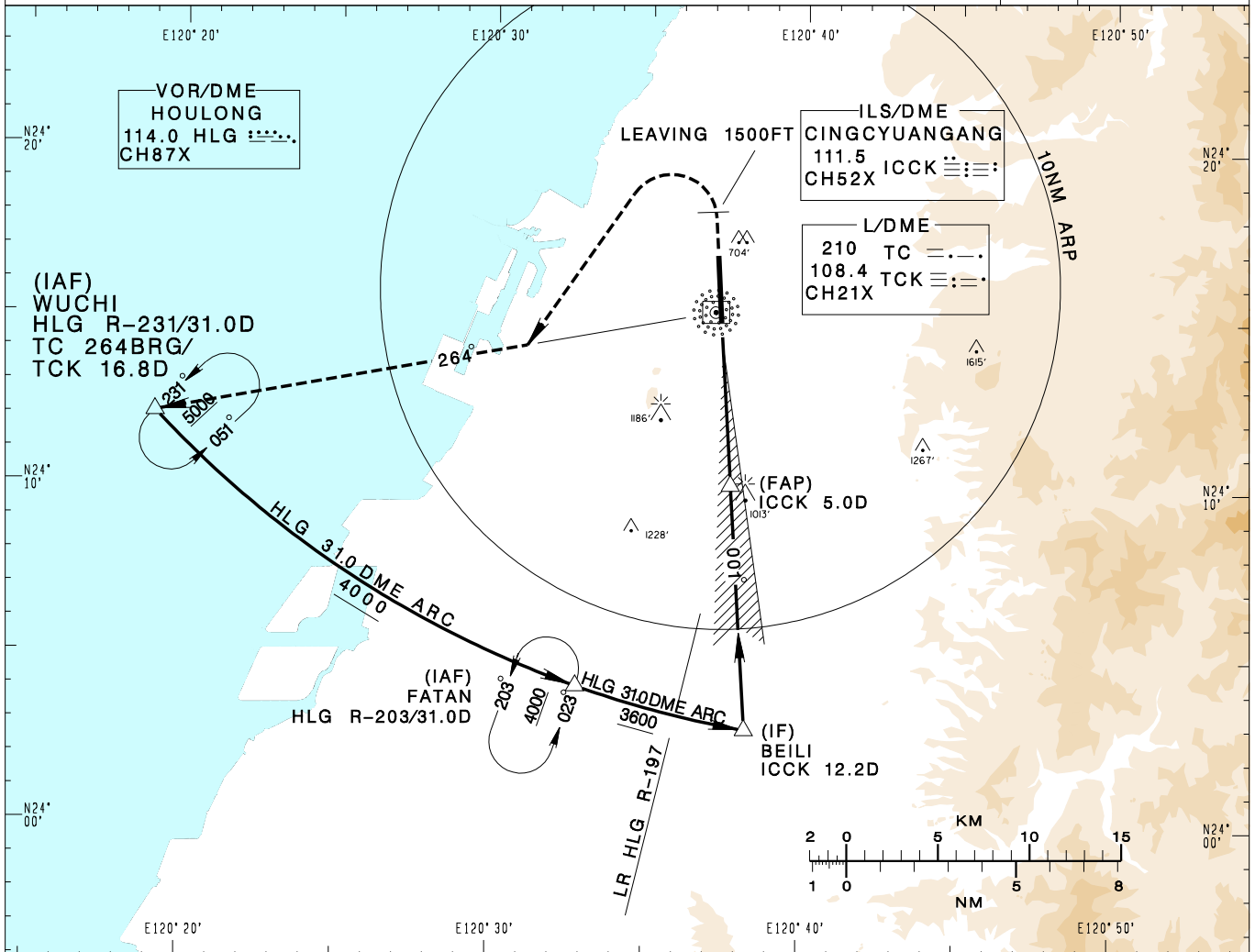


臺中/清泉崗機場
TAICHUNG/CINGCYUANGANG AD

RCMQ
ILS Z RWY36

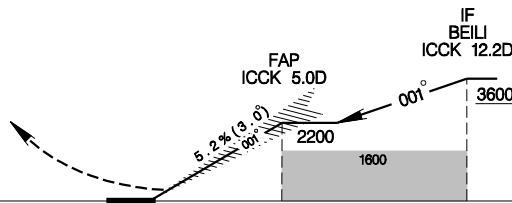
TAIPEI APP 130.1 129.6	TAICHUNG TWR 118.75 120.25	ATIS 127.75	 MSA ARP 25NM VAR 5° W-2022		
Apt Elev: 665'		Rwy36 THR Elev: 663'		Trans Level: FL130	Trans Alt: 11,000'
BEARINGS ARE MAGNETIC; DISTANCES ARE NAUTICAL MILES; ELEVATIONS, HEIGHTS IN FEET					



CHANGES: UPDATE MAG VAR AND LEG CRS; CHG MSA REF

MISSED APCH:
CLIMB RWY HDG TO 1500FT,
TURN LEFT TO TRACK
TC 264BRG TO WUCHI;
CLIMB TO 5000FT AND HOLD.

GP 3.0°
RDH 54



NM FROM ICCK 5 0 5 10 15

MINIMA (OCA IN FT, VIS IN M, OCH IN FT)

CATEGORY	A	B	C	D
STRAIGHT IN	863/RVR ⁸⁰⁰ 750 200	863/RVR ⁸⁰⁰ 750 200	863/RVR ⁸⁰⁰ 750 200	863/RVR ⁸⁰⁰ 750 200
STRAIGHT IN ^(*)	863/RVR 550 200	863/RVR 550 200	863/RVR 550 200	863/RVR 550 200
STRAIGHT IN (ALS OUT)	863/RVR ¹²⁰⁰ 1200 200	863/RVR ¹²⁰⁰ 1200 200	863/RVR ¹²⁰⁰ 1200 200	863/RVR ¹²⁰⁰ 1200 200
CIRCLING	1360/1900 695	1360/2800 695	1600/4400 935	1600/4800 935

NOTE
1. CIRCLING NOT AUTHORIZED EAST OF RWY.
2. ^(*): APPROACH IS FLOWN USING A FLIGHT DIRECTOR, HUD OR COUPLED TO AN AUTOPILOT.

*DME REQUIRED.